



SC TOP SIMPLEX ADAPTER

TOP (True One Piece) Adapter
263/268 series



SC TOP
Simplex
Adapter



SC TOP Simplex
Adapter without
Flange



SC One
Piece
Adapter, No



SC Standard
Adapter,
Welded

The new one piece housing design prevents breakage of the adapter due to the absence of ultrasonic weld type construction.

SC TOP DUPLEX

TOP (True One Piece) Adapter
243/248 series



SC TOP Duplex
Adapter without
Flange



SC TOP
Duplex
Adapter

Features:

- One piece solid body, no welding point (*patent pending*)
- Built in panel mounting plate
- Rattle free wings to support tight "t in the panel (*patent pending*)
- Inner shutter and Outer shutter ready for eye safety
- Flange type, and No #ange type available

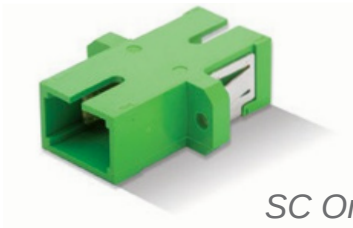




Premium Adapter 242/247 series

SC PREMIUM ONE PIECE SIMPLEX ADAPTER

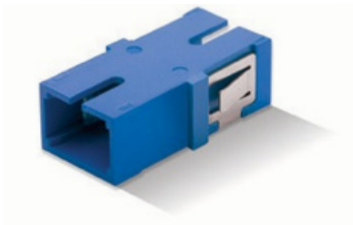
The patented design, one piece adapter is stronger than the conventional, seam-welded SC adapter giving improved side loading strength and the preventing adapter breakage. SC Simplex adapters have been tested to the Verizon FOC TPR 9409 standard and sleeves used in this adapter have been tested and passed the TRP requirements. High TG hooks are used to meet the GR-326 requirements. Shuttered versions are also available.



SC One Piece
Adapter

ADAPTER SPECIFICATION	ZIRCONIA SLEEVE		METAL SLEEVE	
For SC, FC and ST Adapters	Typica	Max	Typica	Ma
Insertion Loss Sleeve /	I 0.05	0.20	I 0.10	x
Ferrule Withdraw Force	200gf - 600gf -40° to +75° <0.1dB			0.3
Operating Temperature	typical change, 500 matings*			0
Durability				

Note: Zirconia tested with SMF
Fiber, metal sleeve tested with MMF



SC One Piece
Adapter without
Flange

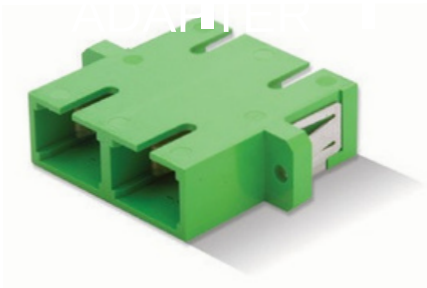
Note: Custom colors available upon request

- Features:**
- Yaax highest quality adapter series
 - Patented one piece housing design prevents housing breakage
 - Designed to exceed the requirement of the Verizon FOC TPR 9409 requirement
 - High TG hook prevents unwanted hook opening in OSP application
 - Typical insertion loss under 0.05dB and Max IL of 0.20dB
 - Various housing color to meet customer's requirement
 - Shutter option ready for eye safety

Premium Adapter 242/247 series

SC PREMIUM ONE PIECE DUPLEX

SC Duplex with
Flange



The new one piece housing design prevents breaking of the adapter due to the absence of ultrasonic weld type construction.



SC One Piece
Adapter, No Weld
Type



SC One Piece
Adapter, No
Weld Type



Conventional
Adapter
Welded type



SC PREMIUM ONE PIECE ADAPTER WITH SHUTTER

Internal Shutter

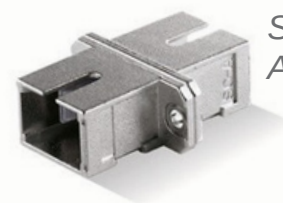


*SC Duplex with
Internal Shutter*

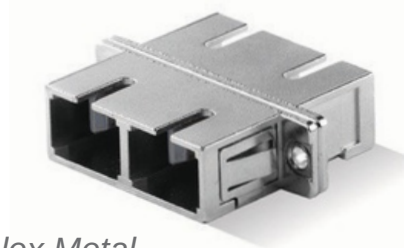


*SC Simplex without
Flange and Internal
Shutter*

SC METAL ADAPTER



*SC Simplex Metal
Adapter*



*SC Duplex Metal
Adapter*

SC SIMPLIFIED CONNECTOR AND



